

CONTINUING MEDICAL EDUCATION ΣΥΝΕΧΙΖΟΜΕΝΗ ΙΑΤΡΙΚΗ ΕΚΠΑΙΔΕΥΣΗ

Hematology-Cell Morphology – Case 11

In the adenogramme (lymph node aspiration) or lymph node imprints after lymph node biopsy there is a cytological polymorphy in the smear and an existence of numerous or rare large cells of about 50 μm with a large size irregular nucleus (sometimes binuclear with an owl eyes-like appearance with fine chromatin network and many large nucleoli and sometimes an abundance of bluish microvacuolar cytoplasm) (figures 1–16). These cells are rare or many according to the histological types of the disease. Similar cells are present sometimes and in other malignancies (e.g. melanoma, sarcoma, thymoma) or in infectious mononucleosis and rubella.

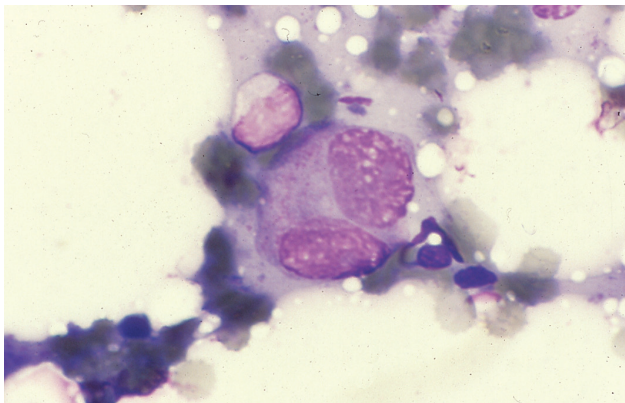


Figure 1

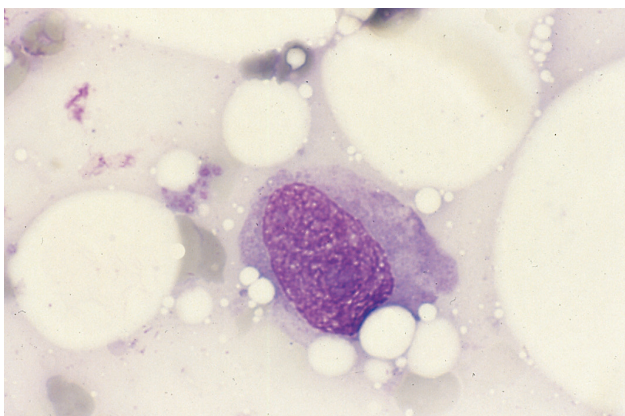


Figure 2

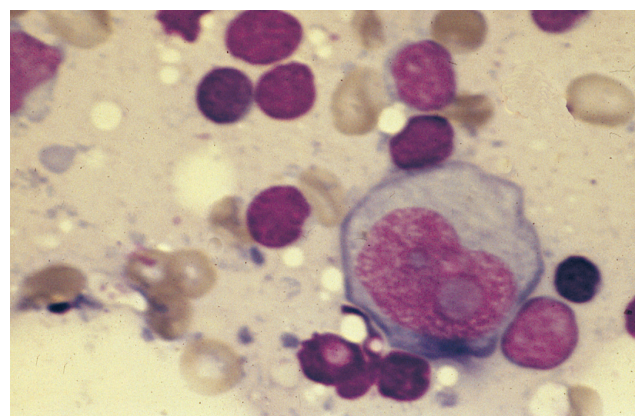


Figure 3

ARCHIVES OF HELLENIC MEDICINE 2021, 38(4):572–574
ΑΡΧΕΙΑ ΕΛΛΗΝΙΚΗΣ ΙΑΤΡΙΚΗΣ 2021, 38(4):572–574

J.V. Asimakopoulos,
L. Papageorgiou,
I. Vasilopoulos,
E. Konstantinou,
D. Galopoulos,
M.P. Arapaki,
C. Chatzidimitriou,
M. Belia,
A. Machairas,
J. Drandakis,
A. Kopsaftopoulou,
A. Piperidou,
A. Georgopoulou,
A. Karapaschalidis,
A. Alexandropoulos,
M.A. Lefaki,
P. Petsa,
F. Panitsas,
K. Benekou,
E. Sinni,
E. Plata,
M.P. Siakantaris,
P. Tsafaridis,
T. Vassilakopoulos,
M.K. Angelopoulou,
K. Konstantopoulos,
J. Meletis

Hematology Department and Bone Marrow Transplantation Unit, National and Kapodistrian University of Athens, School of Medicine, "Laikon" General Hospital, Athens, Greece

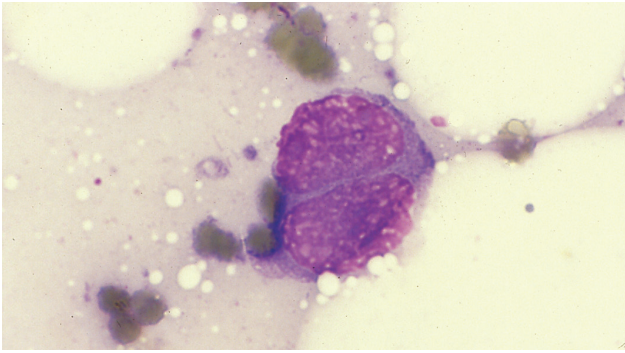


Figure 4

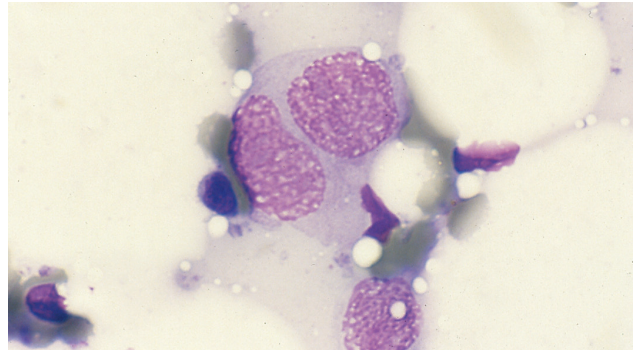


Figure 8

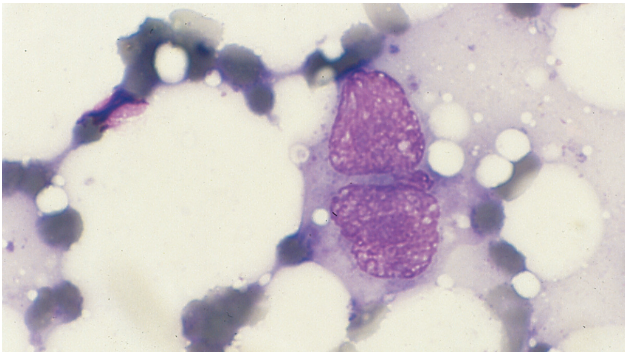


Figure 5

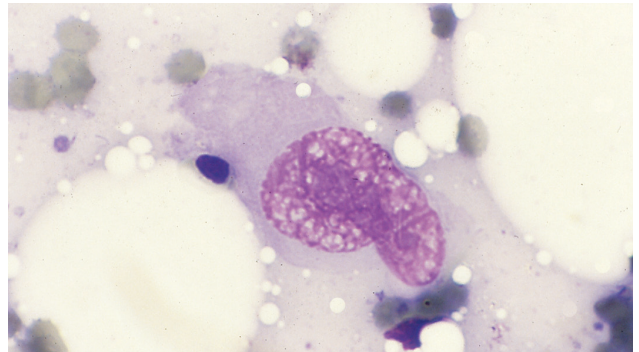


Figure 9

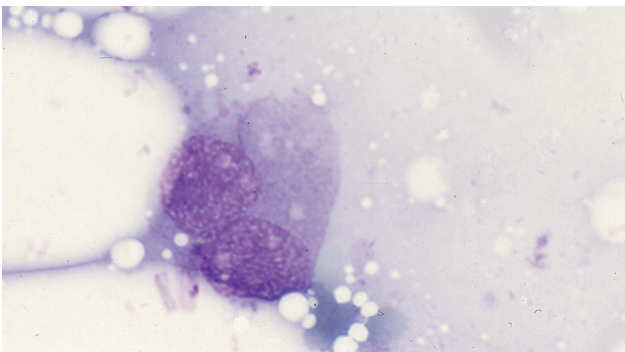


Figure 6

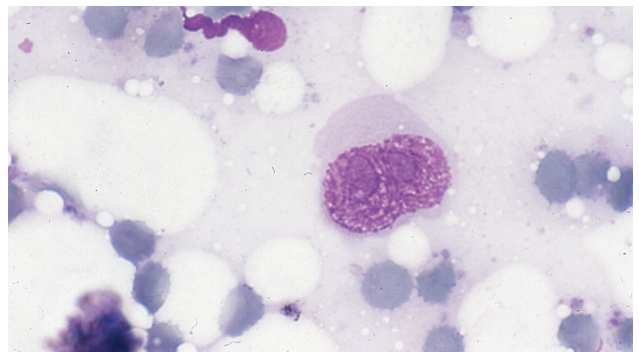


Figure 10

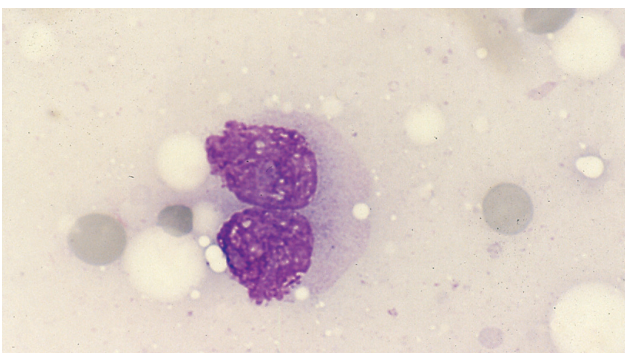


Figure 7

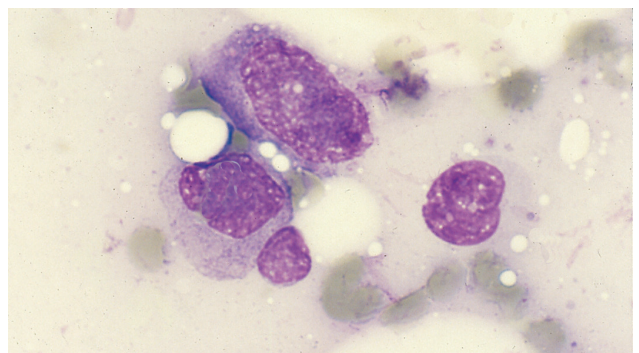


Figure 11

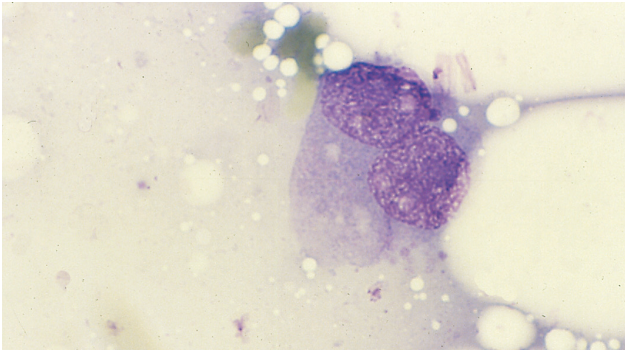


Figure 12

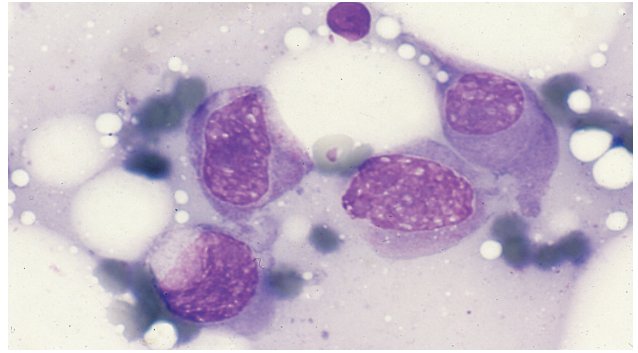


Figure 15

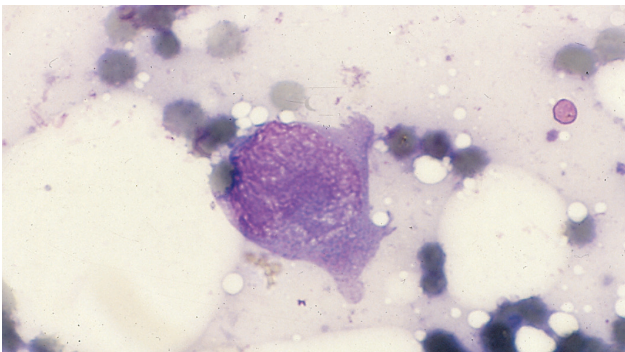


Figure 13

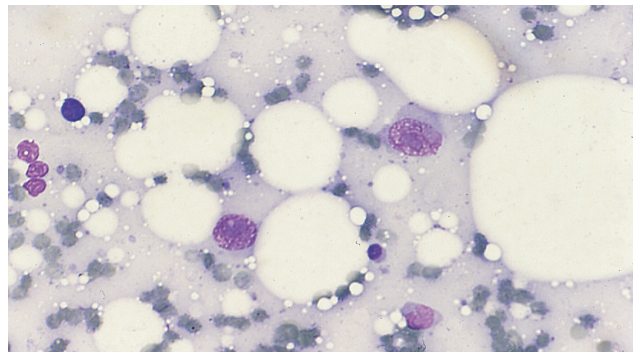


Figure 16

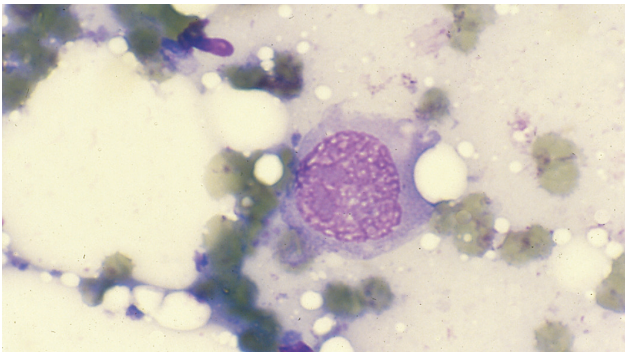


Figure 14

References

- 1. MELETIS J. *Atlas of hematology*. 3rd ed. Nireas Publ Inc, Athens, 2009:131, 134–135, 467–471

Corresponding author:

J. Meletis, Hematology Department and Bone Marrow Transplantation Unit, National and Kapodistrian University of Athens, School of Medicine, "Laikon" General Hospital, Athens, Greece

e-mail: imeletis@med.uoa.gr